

# Nové mikroskopy a stereomikroskopy Carl Zeiss



## Target markets. Jobs-To-Be-Done.

- **Biological Education**
  - Study, determine, dissect. Share.
  - Insects, plants, animals...
  
- **Routine Work in Bio Labs**
  - Sort, observe, manipulate. Document.
  - Embryos, eggs, larvae ...
  
- **Industrial Production & Quality Control**
  - Assemble, repair, inspect. Archive.
  - PCBs, micro mechanics, tools...



## Průmyslová výroba a kontrola kvality

- Mikroskopy



Primotech



Axio Lab.A1



Axio Vert.A1



Axio-Scope.A1



Axio-Observer



Axio-Imager

- Stereo a zoom mikroskopy



Stemi 305



Stemi 508



SteREO Discovery



Axio Zoom.V16

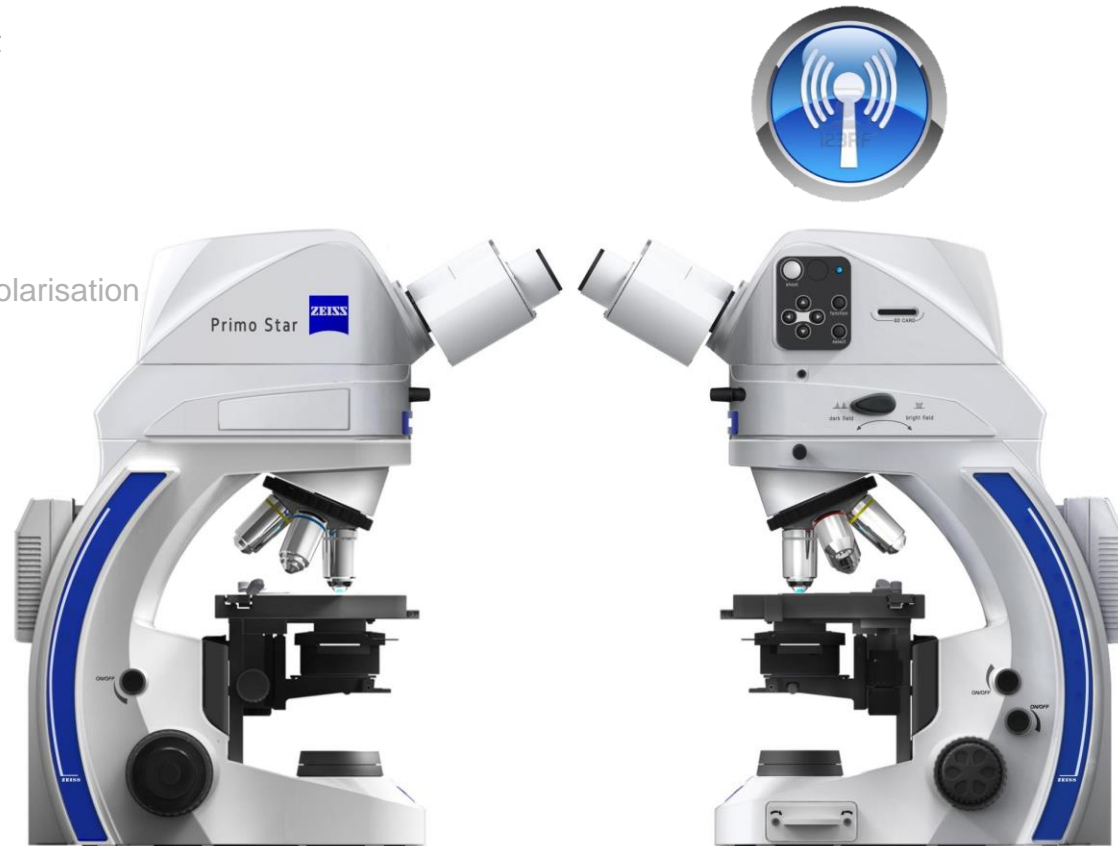


Smartzoom 5



## Dostupný ve čtyřech variantách:

- **Material and Automotive**
  - 35mm sample height
  - Simple transmitted and reflected light
- **Electronic Industry**
  - Reflected-/Transmitted light
- **Ore Microscopy**
  - Reflected light / Transmitted light - Polarisation
- **Geology / Mineralogy**
  - Transmitted light / Conoscopy
- Carl Zeiss - ICS Optics
- Visual field 20mm
- LED illumination
- 5 encoded objective nosepiece
- Cameratube with W-Lan
- I- Pad, Software via Zeiss App





## Product Specifications & Targeted Customers

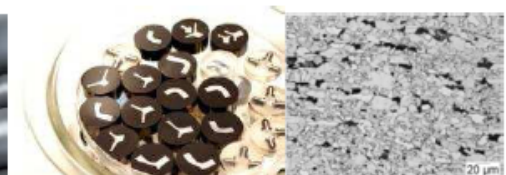


### Configuration A

Stand A: MAT version  
Advanced RL + Simple TL



Contrast	BF / Oblique / simple POL
Nosepiece	5 positions, W 0.8, encoded
Magnification	Epi-plan 5x, 10x, 20x, 50x, 100x
Stage travel	fixed x-y stage / 75 x 50 mm
Sample height	up to 35 mm
Condenser	no
Illumination	TL / 5 W LED and RL/ 5 W white LED
Accessories	polarizer / analyzer / oblique / filter sliders
Targeted customers	Industrial & Educational for metallography: Such as metal pipes, mechanical etc.,



## Product Specifications & Targeted Customers



### Configuration **B**

Stand B: MAT version  
Advanced RL + Advanced TL



Contrast	BF / Oblique / simple POL
Nosepiece	5 positions, W0.8, encoded
Magnification	Epi-plan 5x, 10x, 20x, 50x, 100x P-plan POL 5x, 10x, 20x, 40x, 63x
Stage travel	fixed x-y stage / 75 x 50 mm
Sample height	up to 17 mm
Condenser	Removable Abbe condenser 0.9 with fixed carrier
Illumination	TL / 5 W LED and RL/ 5 W white LED
Accessories	polarizer / analyzer / oblique / filter sliders
Targeted customers	Electronic & Educational for metallography: PCB, SMT etc.,



- **Real-time hardware-accelerated live image:** with less than 400ms delay and smooth 15-20 frames per second, navigating and focusing the sample is as easy on the screen as when looking through the oculars
- **Connect several microscopes to the network:** Matscope shows thumbnails of all microscopes connected in the network





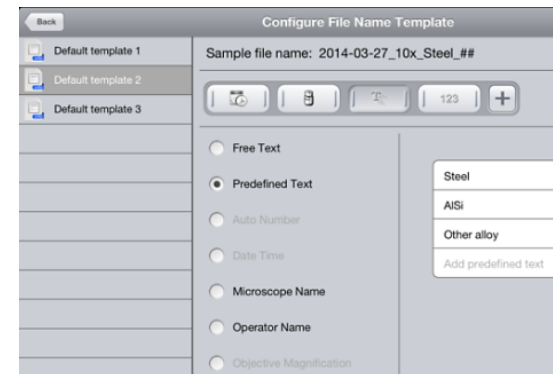
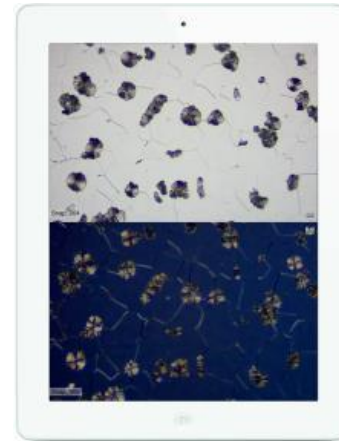
- **Save and open images in .czi or .jpg format:**  
Images can be saved where all meta- data is preserved and measuring/editing can continue after loading the image. Additional measurements or annotations can be „burned in“



- **Exchange files with any PC through built-in folder support:** share images, videos and reports with colleagues on shared network-folders without the need of additional software



- **Side-by-side comparison:** compare the live image with any saved image. Press the save button and the comparison image is saved as a new image
- **Filename templates:** Manage even large numbers of images with ease that turns out to be important a few weeks later. Up to six file name elements can be defined per template, for example a pre-defined list of texts or free text parts of the filename can be set on save if more freedom is needed





## Jednoduchost, vše v jednom přístroji

- Easy to install
- Easy to operate
- Easy to transport
  
- Integrated LED illumination
- Integrated PSU
- Integrated Camera (option)
  
- Pre-configured sets for main applications:  
EDU, LAB and MAT microscope sets



## Univerzálnost a modulární osvětlení.

- Changeable reflected light modules:  
ring light, spot, double spot  
→ Optimized light for your application
- Near vertical illumination always integrated
- Two transmitted light units:  
Flat BF-DF unit in „stand K Edu“  
Tilttable mirror unit in „stand K Lab“
- Longlife high brightness LEDs,  
maintenance free





## Integrovaná kamera a Wi-Fi

- Easy and affordable documentation.

„Stemi 305 cam“: Wifi camera integrated.

- Use of Labscope / Matscope Apps
- Suited for Networks in digital classroom

„Stemi 305 trino“ :

- Photo tube with 50/50 split
- Integrated 0,5x camera adapter, c-mount
- Suited for Axiocams up to 2/3“



- Integrated vertical illumination



- Spot illumination



- Double arm gooseneck



- Ring light, segmentable



- Contrast TL base



- Flat TL unit BF/DF





## Stemi 305 Edu microscope set

- Stemi 305 bino incl eyepieces
- Integrated vertical illumination
- Spot illuminator K for BF/DF
- flat transmitted light unit BF/DF

## Stemi 305 Lab microscope set

- Stemi 305 bino incl eyepieces
- Integrated vertical illumination
- Double arm gooseneck
- tiltable mirror TL base

## Stemi 305 Mat microscope set

- Stemi 305 ESD incl eyepieces
- Integrated vertical illumination
- Segmentable LED ring light
- ESD functionality, ESD

# Stemi 508 series – Kvalitní optika, přesná mechanika.



## Quality optics. Apochromatic.

- Large zoom range 8:1
- Large overview, zoom starts at 0.63x
- Largest field 121 mm (with front optics 0.3x)
- Apochromatic corrected zoom optics.
- Range of Apochromatic front optics
- Image free of color fringes
- High contrast stereo image
- Excellent stray light reduction
- Distortion free for relaxed viewing





## Přesná mechanika, dlouhá životnost.

- Low tolerance mechanical parts enable exact zoom adjustment
- 10 precise zoom clickstops, detachable
- Dust protection glass included
- Durable and reliable mechanics
- Designed for heavy workload
- Accelerated lifetime tests for 10 yrs of use
- Quality as known from Stemi 2000



## Flexible. For your application.

- For easy documentation:  
0.5x camera adapter included (60N interface)
- For limited lab space :  
Stand K platform (as Stemi 305)
- For higher stand demands:  
Large Stand N with stemi carrier  
Stable boom stands A and SDA
- For brightest light and special contrasts:  
CL4500 LED , various light guides.  
True colors due to CRI 90



- Large stand N



- Double arm boom stand SDA



- CL 4500 LED with CRI 90



- Vertical illuminator S





ZEISS Labscope Imaging App



ZEISS Labscope Imaging App

**Stemi 305 cam:**  
„WLAN access point“ Mode



ZEISS Labscope Imaging App



ZEISS Labscope Imaging App

**Stemi 305 cam:**  
„Add to existing WLAN“ Mode



**Stemi 508 doc + ERc 5s +  
External WLAN router**



We make it visible.



Authorized Carl Zeiss Business Partner, CZ & SK